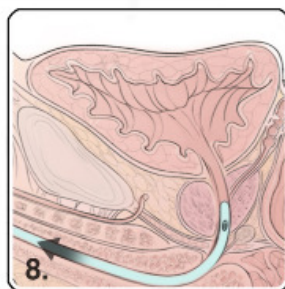
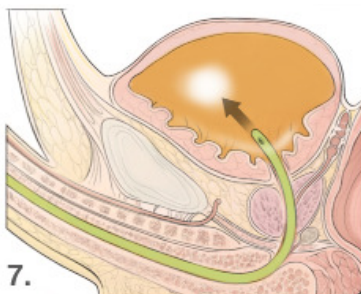
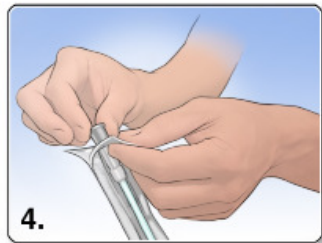
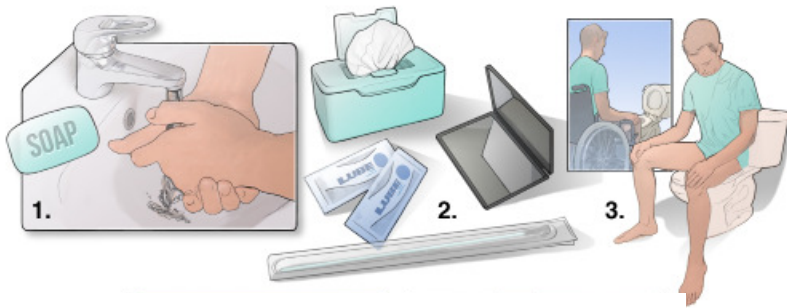


Before you begin, gather your supplies:

- Catheter in sealed wrapper
- Lubricant if not using a hydrophilic catheter
- Handwashing materials
- Collection device if not cathing while sitting on or near a toilet



1. Thoroughly wash hands with soap and water or use an antibacterial hand cleaner.
2. Lay out the supplies so they are within easy reach.
3. Position yourself in comfortable position on the toilet or in your wheelchair with your legs spread apart.
4. Prepare the catheter:
 - a. Hydrophilic catheter: If your catheter has water sachet inside, before opening, squeeze the packet in half inside the outer package until the liquid bursts open. Tilt outer package back and forth or let sit for 30 seconds if necessary (follow specific manufacturer directions on packaging). Open outer package and remove new lubricated catheter.
 - b. If using lubricant, open catheter and remove from package. Apply generous amount of lubricant to the tip and first several inches of the catheter.
5. Using your non-dominant hand, hold the penis straight. (If uncircumcised, move back the foreskin as well.) Wash the tip of the penis in a circular motion with a towelette.
6. With dominant hand, insert the catheter gently into the tip of the penis (the urethral opening) until urine begins to flow. Gently tilt the penis down when urine begins to flow. (If using a coude catheter, confirm the line on the funnel, guide line or marking is facing up.)
7. Hold the catheter in place until the urine stops flowing, completely emptying the bladder.
8. When urine stops flowing, slowly rotate the catheter between your fingers while withdrawing the catheter.
9. Properly dispose of the catheter and used materials. Wash your hands.